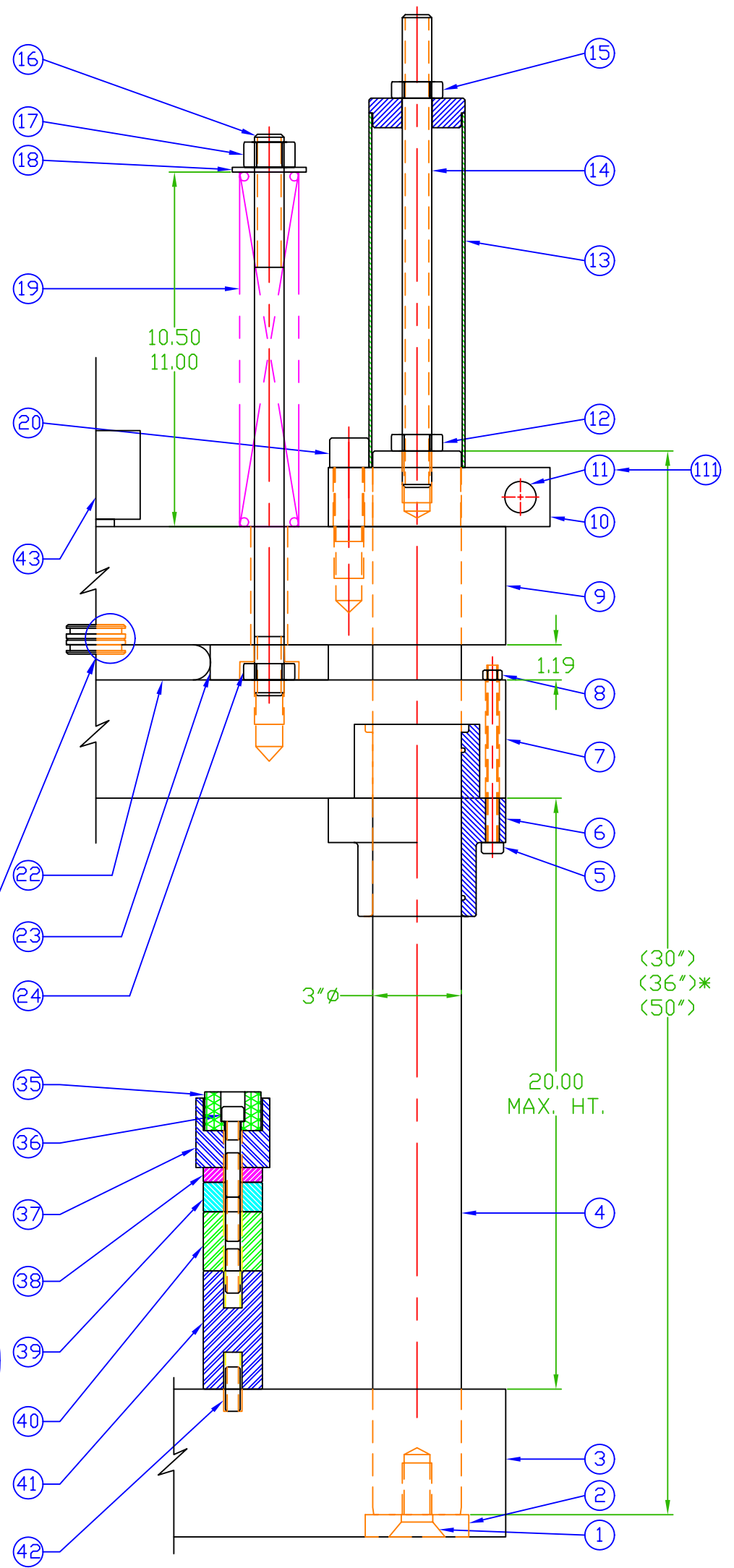
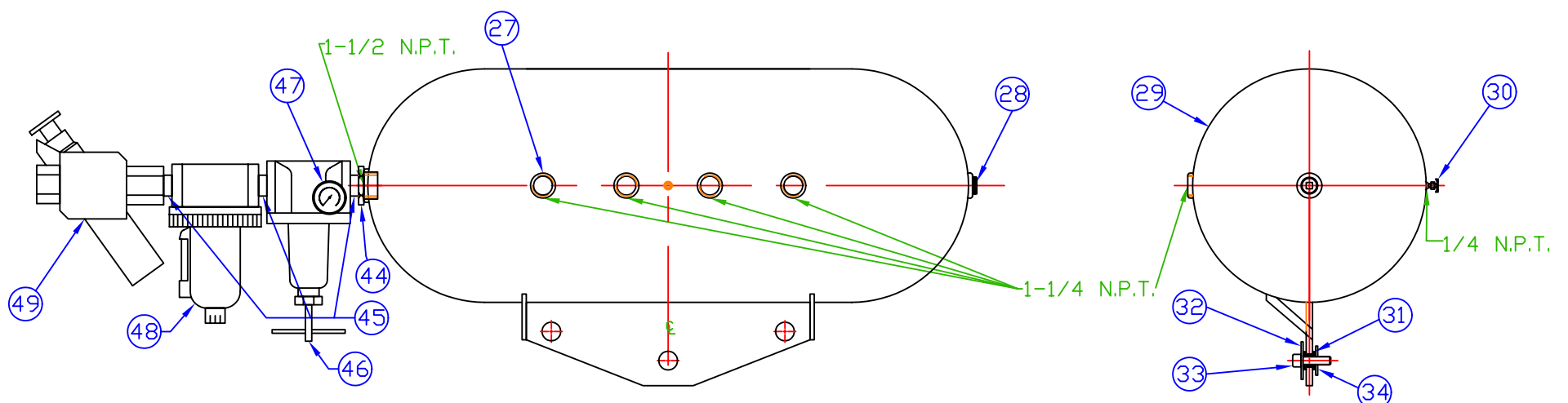


| NO. | PART NUMBER | NAME | QTY. |
|------|-----------------------|------------------|------|
| 1 | ATP-1-8 X 2.50-H | BOLT BED | 4 |
| 2 | ATP-330 | POST RETAINER | 4 |
| 3 | | BED | 1 |
| 4A | ATP-062-1 | GUIDE POST 30" | 4 |
| 4B | ATP-062-2 | GUIDE POST 36" | 4 |
| 4C | ATP-062-3 | GUIDE POST 50" | 4 |
| 5 | ATP-4375-14 X 5 | BOLT BUSHING | 32 |
| 6 | ATP-1908 | BUSHING | 4 |
| 7 | | RAM | 1 |
| 8 | ATP-4375-14-LN | NUT BUSHING | 32 |
| 9 | | CROWN | 1 |
| 10A | ATP-097 | CLAMP RING | 4 |
| 10B | ATP-1968 | CLAMP RING | 4 |
| 11A | ATP-875-9 X 5 | BOLT POST | 4 |
| 11B | ATP-1-8 X 5 | BOLT POST | 4 |
| 111A | ATP-875-9-LN | NUT POST | 4 |
| 111B | ATP-1-8-LN | NUT POST | 4 |
| 12 | ATP-1-8-JN | NUT ROD | 4 |
| 13 | ATP-264 | POSITIONER | 4 |
| 14 | ATP-1-8 X 12-R | POS. ROD | 4 |
| 15 | ATP-1-8-HN | NUT ROD | 4 |
| 20A | ATP-625-11 X 3 | BOLT CLAMP | 8 |
| 20B | ATP-1-8 X 3.25 | BOLT CLAMP | 8 |
| 16 | ATP-120 | STUDS SPRING | 31 |
| 17 | ATP-1-14-LN | NUT SPRING | 31 |
| 18 | ATP-1 ID | WASHER SPRING | 31 |
| 19A | ATP-9-3248-2 | SPRING RED | 31 |
| 19B | ATP-9-3248-3 | SPRING GOLD | 31 |
| 23 | ATP-171 | UPSTOP | 31 |
| 24 | ATP-1-14-JN | NUT STOP | 31 |
| 21 | ATP-1815 | ADAPT. AIRTUBE | 4 |
| 22A | ATP-188 (F-14) | AIRTUBE 14" O.D. | 4 |
| 22B | ATP-189 (F-18) | AIRTUBE 18" O.D. | 4 |
| 22C | ATP-190 (F-24) | AIRTUBE 24" O.D. | 4 |
| 22D | ATP-191 (F-30) | AIRTUBE 30" O.D. | 4 |
| 25 | ATP-RR-200 | ADAPT. RET. | 4 |
| 26 | ATP-2-224 | O-RING | 8 |
| 27 | ATP-PG12000-01 | PIPE PLUG | 1 |
| 28 | ATP-PG15000-01 | PIPE PLUG | 1 |
| 29 | ATP-629 (293) | TANK | 1 |
| 30 | ATP-DC02000-01 | DRAINCOCK | 1 |
| 31 | ATP-CB-1121-2 | SHOCK MOUNT | 3 |
| 32 | ATP-J-2049-64 | MOUNT WASHER | 3 |
| 33 | ATP-50-13 X 2 | BOLT TANK | 3 |
| 34 | ATP-50 ID | WASHER TANK | 3 |
| 35 | ATP-052 | POLY TIP | 4 |
| 36 | ATP-50-13 X 1 | BOLT STOP | 4 |
| 37 | ATP-649 | STOP HEAD | 4 |
| 38 | ATP-519-1 | RAM STOP EXT. | 4 |
| 39 | ATP-519-2 | RAM STOP EXT. | 4 |
| 40 | ATP-519-3 | RAM STOP EXT. | 4 |
| 41 | ATP-519-4 | RAM STOP EXT. | 4 |
| 42A | ATP-50-13 X 1.5-SSC | SET SCREW STOP | 16 |
| 42B | ATP-50-13 X 2-SSC | SET SCREW STOP | 16 |
| 34 | ATC-10032-R | AIR VALVE | 4 |
| 36 | ATP-1.50X1.25-HXBS-01 | HEX BUSHING | 1 |
| 37 | ATP-NI12002-01 | PIPE NIPPLE | 3 |
| 38 | ATC-REG-125-01 | REGULATOR | 1 |
| 39 | ATC-REG-GAU-01 | GAUGE | 1 |
| 40 | ATC-FIL-125-01 | FILTER | 1 |
| 41 | ATC-SHU-125-01 | SHUT OFF | 1 |

PNEUMATIC PRESS 3" GUIDE POST



TANK ASSEMBLY



TYPICAL MODELS:

| | | |
|----------|----------|-----------|
| ATP-1090 | ATP-810 | ATP-1075 |
| ATP-128 | ATP-6345 | ATP-1080 |
| ATP-479 | ATP-454 | R-4700 |
| ATP-528 | ATP-8427 | ATP-1085 |
| ATP-6420 | ATP-7433 | ATP-6540 |
| ATP-430 | ATP-5555 | ATP-9500A |
| ATP-354 | ATP-1050 | ATP-9996 |
| ATP-9520 | ATP-1055 | |
| ATP-950 | ATP-1060 | |
| ATP-5941 | R-4500 | |
| ATP-1655 | ATP-1020 | |
| ATP-5945 | ATP-1030 | |
| ATP-6242 | ATP-1040 | |
| ATP-1665 | ATP-1070 | |
| ATP-7051 | R-4600 | |